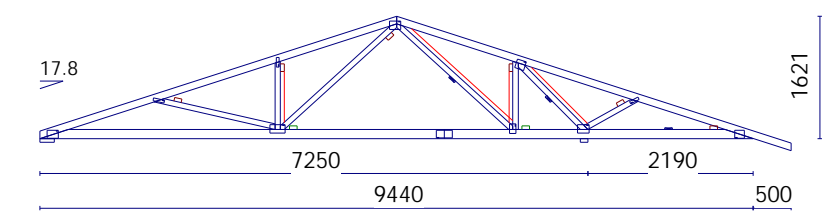
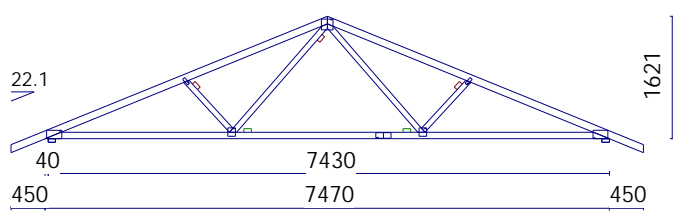
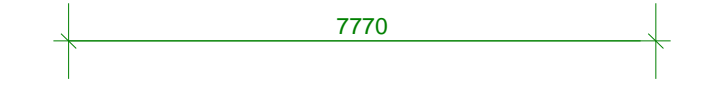
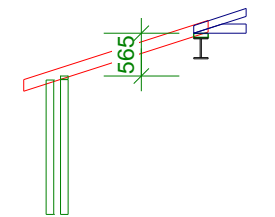


50 X 150 C24 RAFTERS  
(ARCHIECT'S SPEC)

50 X 175 C24 FLAT ROOF JOISTS  
(ARCHIECT'S SPEC)

Bracing Colours  
 Rafter Bracing — . — .  
 C/Tie Bracing — — — —  
 Web Bracing - - - -



TREBLE TRUSS TO CARRY STUDWORK

TREBLE TRUSS TO CARRY STUDWORK

THIS INFORMATION IS SUPPLIED IN GOOD FAITH BUT WITHOUT LIABILITY. IT IS THE BUILDING DESIGNERS RESPONSIBILITY TO ENSURE THE STABILITY OF THE OVERALL STRUCTURE.

READ BROTHERS LIMITED(NTE) Tel. 01603 401319 (Fax 417137).

SITE :

SPACING : 600mm      DATE : 12-10-2010      PROJECT :

Drawn : M.J.Read CMIWSc      Checked :

LOADS: Tiles=685      Snow=750 N/m2      DRG NO :