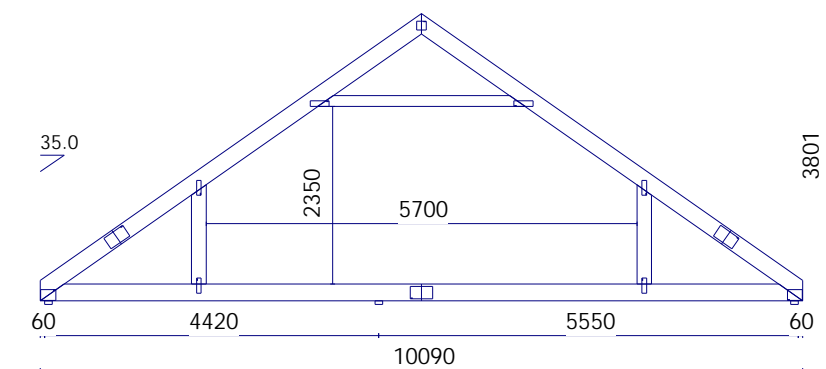
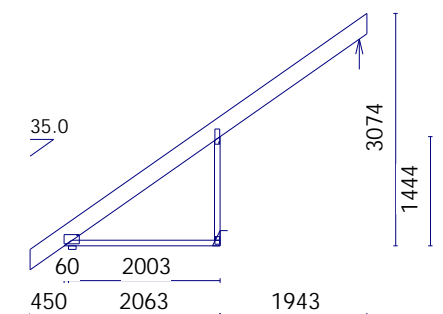


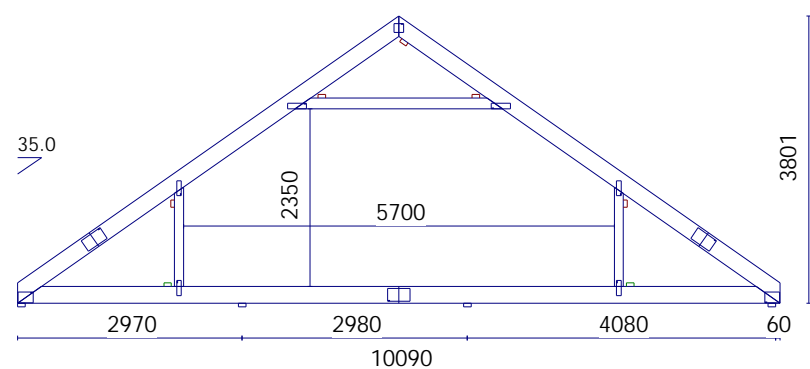
A 1x3PLY - 132 kg/ply



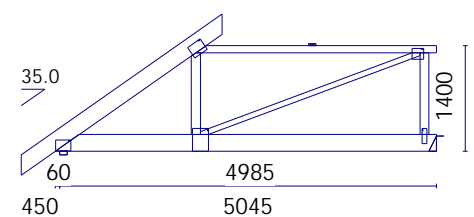
E 1x4PLY - 136 kg/ply



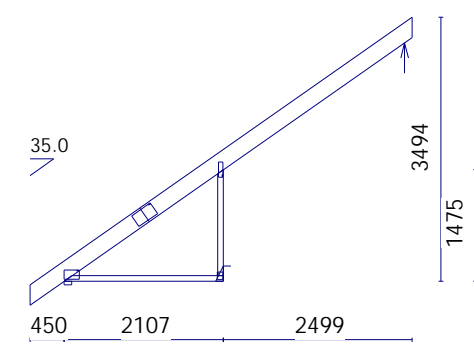
K 8 OFF - 34 kg/ply



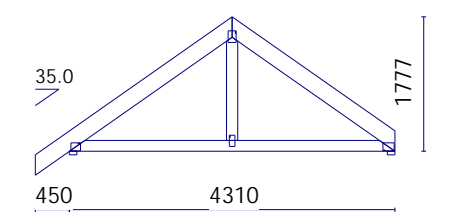
B 1x2PLY - 132 kg/ply



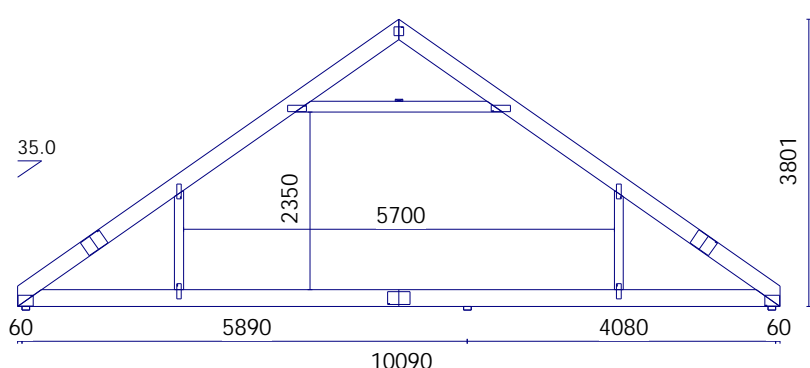
F 2x3PLY - 61 kg/ply



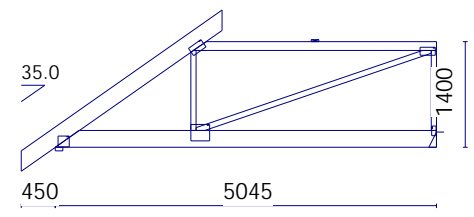
L 1 OFF - 38 kg/ply



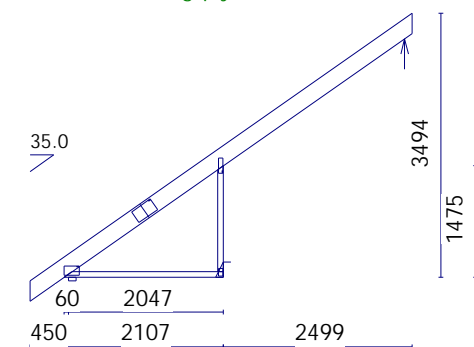
P 1x2PLY - 49 kg/ply



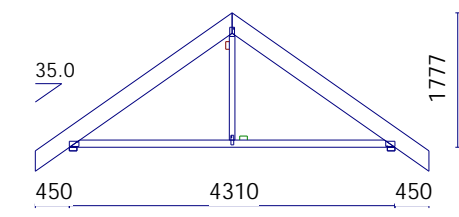
C 2x1PLY & 2x2PLY - 132 kg/ply



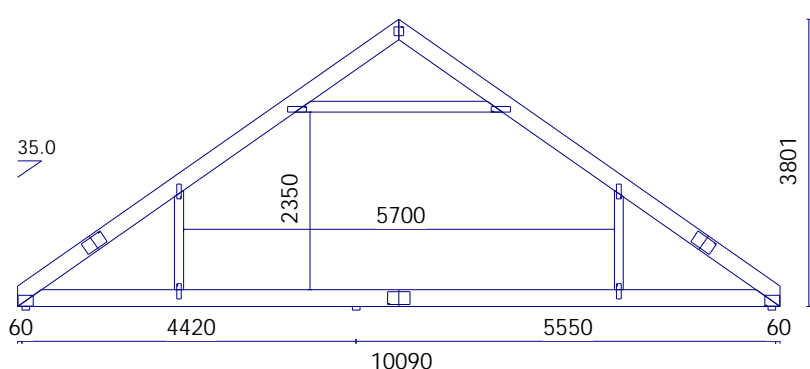
G 1x2PLY - 61 kg/ply



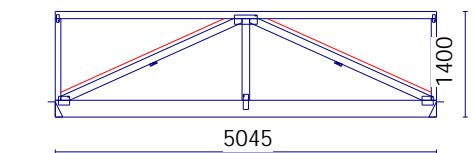
M 1 OFF - 38 kg/ply



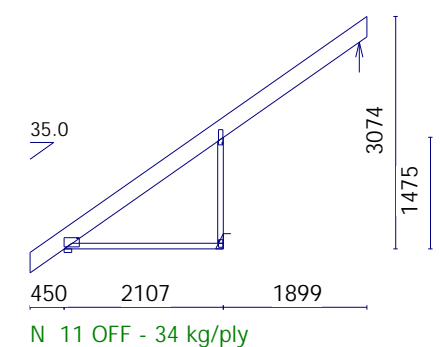
Q 3x1PLY & 1x2PLY - 45 kg/ply



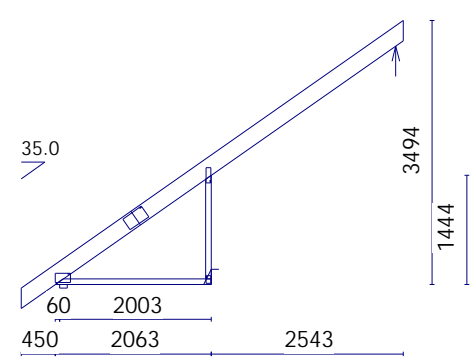
D 1x2PLY - 132 kg/ply



H 1x2PLY - 56 kg/ply



N 11 OFF - 34 kg/ply



J 2 OFF - 38 kg/ply

READ BROTHERS LIMITED(NTE) Tel. 01603 401319 (Fax 417137).

SITE :

SPACING : 600mm      DATE :

PROJECT :

Drawn : M.J.Read CMIWSc      Checked :

LOADS: Tiles=685      Snow=750 N/m2      DRG NO :